



**INSPEKTO**  
AUTONOMOUS MACHINE VISION

# Injector's Pallet - Integrity Check

## Inspection Use Case

### Application

Check for missing semi-transparent cap + small black cap

### Inspection objective and potential defect description

A pallet of 6 injectors, which need to be checked in 1 shot for completeness making sure no missing semi-transparent plastic cap or small rubber black cap

### Potential Defect Types

Missing caps

### Permitted defects

- There could be slightly different batches and models or parts in the pallet.
- Rubber cap may vary in shape and how completely it was pushed on during assembly, leading to slight variation in the position of the end of the cap.

### Special inspection challenges

Parts are not fixed and can move slightly in the pallet.

## Production Environment

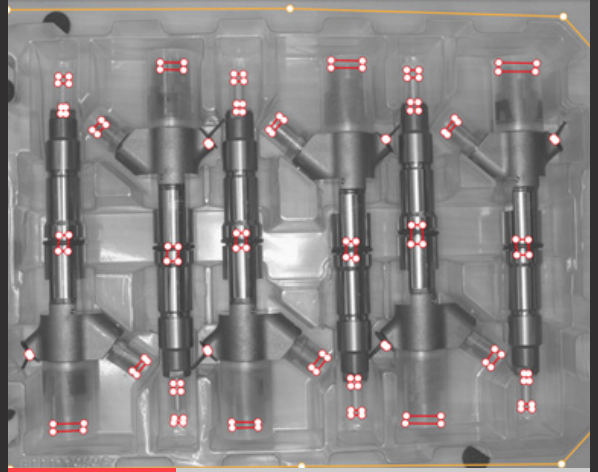
### Inspection triggering method

Manual

### Production speed

40 ppm

[www.inspekto.com](http://www.inspekto.com)



## Part Description

Name

Injectors' Pallet

Materials

Metal and Plastic

Production process

Packaging

Industry

Automotive

## Using INSPEKTO S70

